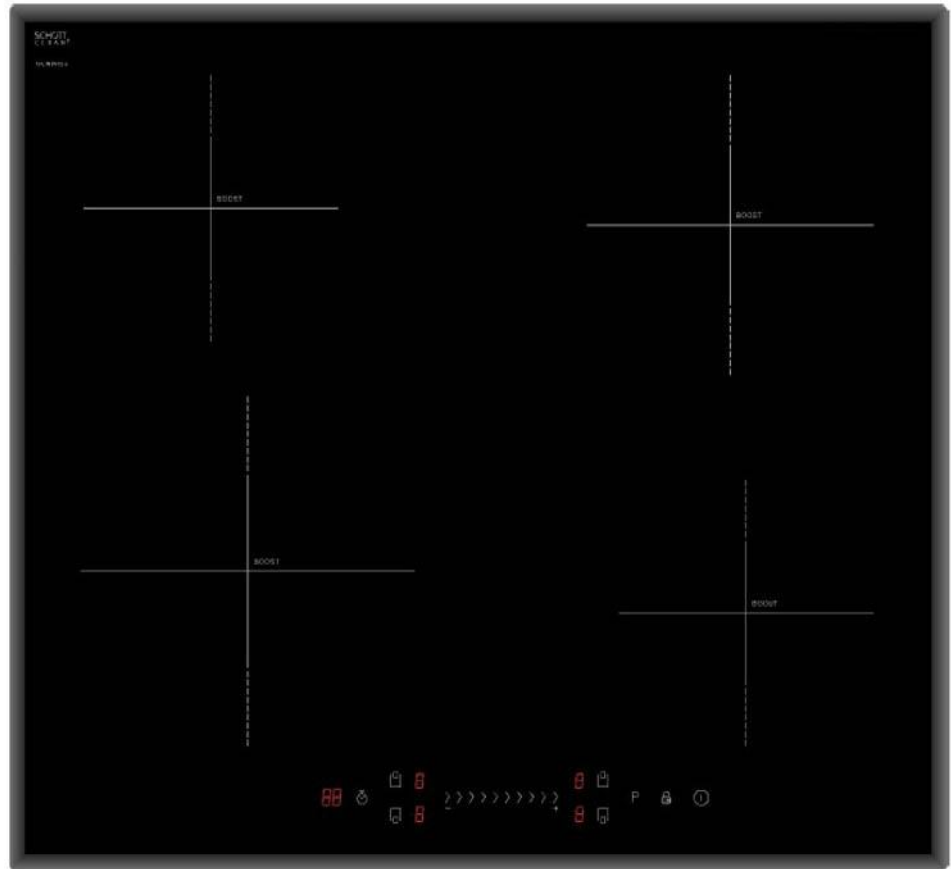


# CFEIND641-5

## 600mm Induction Cooktop

### Product Features

- 4 cooking zones with Boost
- Premium Schott-Ceran glass
- Slide-touch control
- 9 power settings (per zone)
- 99 minute timer
- Child Lock
- Automatic safety switch-off
- Residual heat indicators
- Frameless bevelled edges



#### Sensor touch controls

Simply press the sensor touch control until the desired heat level is achieved. From a low simmer to a high boiling point, any level of heat is easily obtained.

#### Efficiency and speed

Our induction cooktops transfer heat directly to cookware using magnetic fields. This means that heat is instant, precise, and only heats your cookware – not surrounding areas, making it extremely energy efficient and safe..

#### Easy to clean

The ceramic glass finish, one piece cooktop, and removable controls allow for easy cleaning. For best results wipe away any spills with a damp cloth from the surface once the cooktop has cooled down

#### Timer

Meals will be ready when you are by setting a time ( up to 99 minutes) which turns the cooktop off after desired time has been reached.

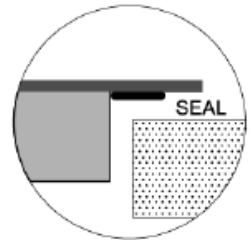
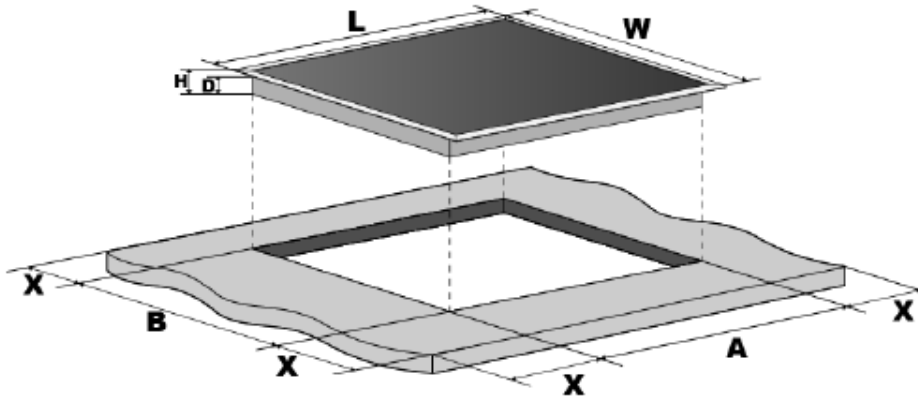
#### Safety

Where available our child lock allows the control panel to be locked so programs can't be altered.

#### Design

This cooktop has been designed to compliment all of the cooking appliances in the Technika range.

## 600mm Induction Cooktop



	L(mm)	W(mm)	H(mm)	D(mm)	A(mm)	B(mm)	X(mm)
CFEIND641-5	590	520	58	54	565	495	50 min

These dimensions are a guide only, please refer to product manual for up to date dimensions and product information

### READ THE INSTRUCTION BOOKLET BEFORE INSTALLING AND USING THE APPLIANCE.

The manufacturer will not be responsible for any damage to property or to persons caused by incorrect installation or improper use of the appliance.

The manufacturer is not responsible for any inaccuracies, due to printing or transcription errors, contained in this handout. In addition, the appearance of the figures reported is also purely indicative.

The manufacturer reserves the right to make changes to its products when considered necessary and useful, without affecting the essential safety and operating characteristics.

Technika constantly seeks ways to improve the specifications and designs of their products.

Whilst every effort is made to produce up to date literature, this document should not be regarded as an infallible guide.

Actual product only should be used to derive cut out sizes.

All Technika Appliances must be installed by a qualified person/s with adherence to the relevant electrical, plumbing and building codes, with compliance being issued as required by state or national legislation.

Additionally all Technika Upright cookers must have chains installed correctly in adherence to the relevant standards by the Licenced installer.

For maximum effectiveness and efficiency all rangehoods should be installed with the use of ductwork, by a licenced installer with adherence to the relevant state and national building codes and regulations.

All Technika appliances are for Domestic use only, and must be installed by a licence installer into Domestic Applications only, without exception and to the required Authorities guidelines. Any installation outside of this will VOID warranty. Alfresco areas are not a Domestic application